



Evergreen® Spectral™

Patented Evergreen® Spectral™ Coating Will Enable Seamless Cloaking of Solar Panels and Security Sensors

NORFOLK, VA (SEPTEMBER 19, 2018) – The Face® Companies of Norfolk, Virginia today announced the development of a revolutionary coating technology that will enable light-sensitive devices such as solar panels and photosensors to be disguised or seamlessly concealed, significantly increasing the aesthetic and economic appeal of these devices for a wide range of applications.

The patented coating, called Spectral™, is another innovation from The Face Companies' Evergreen® Technologies. Durable and paper-thin, it appears opaque when applied to any surface but actually allows 80% or more of incoming light to pass through it.

Spectral™ can be applied like paint in virtually any color, pattern or texture, making light-harvesting devices such as thin film photovoltaic (PV) panels essentially invisible. A solar-powered roof shingle now can look just like a conventional shingle, or a solar panel on the roof of an electric car can be visually indistinguishable from the rest of the vehicle's surface. The coating can also be applied to the back of a smartphone case to conceal a solar charging panel.

Light-sensing security devices are another major Spectral™ application. With the innovative coating, motion detectors or photodetectors can be made to blend in with their surroundings, looking like rocks, fence posts or other common objects.

"Spectral may be one of the most significant advances to date in making solar power and light harvesting both visually attractive and economically feasible in thousands of new applications," said Brad Face, CEO of The Face® Companies. "With this coating, both natural and artificial light harvesting can be used in virtually every building to power a wide range of electronic devices and security sensors, including those enabled by the Internet of Things."

The following video describes the Spectral™ coating and some of its many applications:

[Evergreen® Spectral™ Video \(Animation\) – 6:05](#)

And this video shows working demonstrators of the new technology:

[Evergreen® Spectral™ Video \(Demonstrations\) – 3:30](#)

Company Contact:

Brad Face
The Face® Companies
757.624.2121
info@facecompanies.com

Media Contact:

Chris Burke
BtB Marketing
919.872.8172
chris.burke@btbmarketing.com



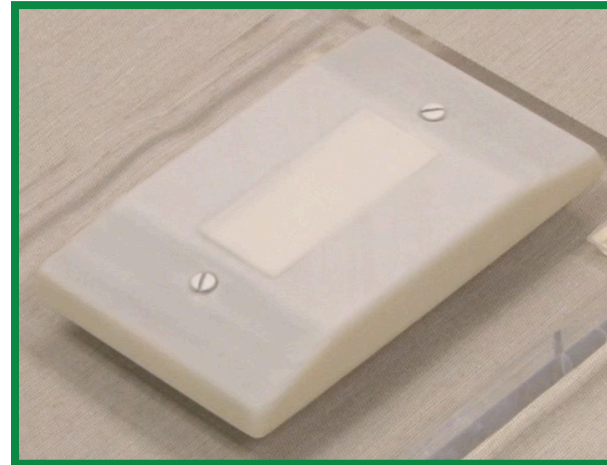
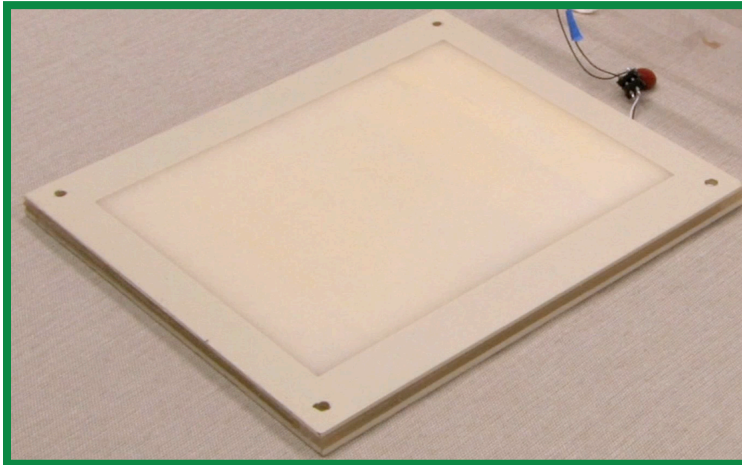
Spectral™ is one of the Evergreen® Technologies from The Face® Companies

FaceCompanies.com • info@facecompanies.com

427 W. 35th St. • Norfolk, VA 23508 • 757.624.2121
Patented and Patents Pending • September 19, 2018



Spectral™ Technology Demonstrators

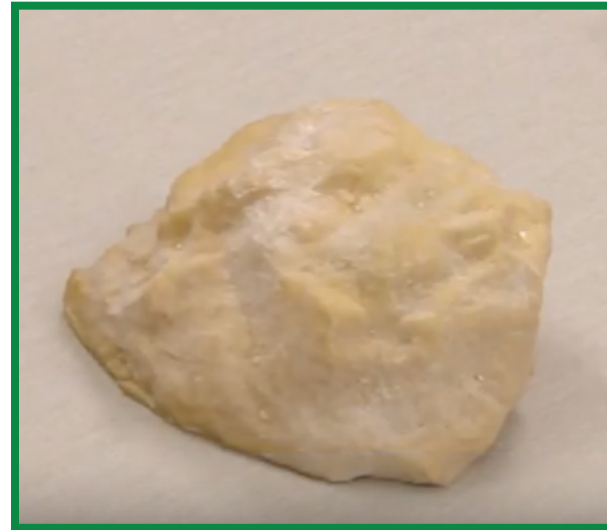


These Spectral™ technology demonstrators were developed in the Face® labs more than three years ago.

The panel above is a revolutionary light harvester. The apparently opaque coating actually allows 80% or more of the light to pass through it to the electricity-generating photovoltaic film that it covers.

The “light switch” is a remote control wireless switch powered by ambient light. The generated electricity is stored in a capacitor, allowing the device to continue working for months in total darkness. It can be triggered by touching, motion-sensing or voice-control.

The “rock” is actually a covert, self-powered motion and vibration sensor. Light passes through the seemingly opaque surface, powering the sensors concealed inside and the wireless transmission of the sensor data.



Spectral™ is one of the Evergreen® Technologies from The Face® Companies

FaceCompanies.com • info@facecompanies.com

427 W. 35th St. • Norfolk, VA 23508 • 757.624.2121

Patented and Patents Pending • September 19, 2018